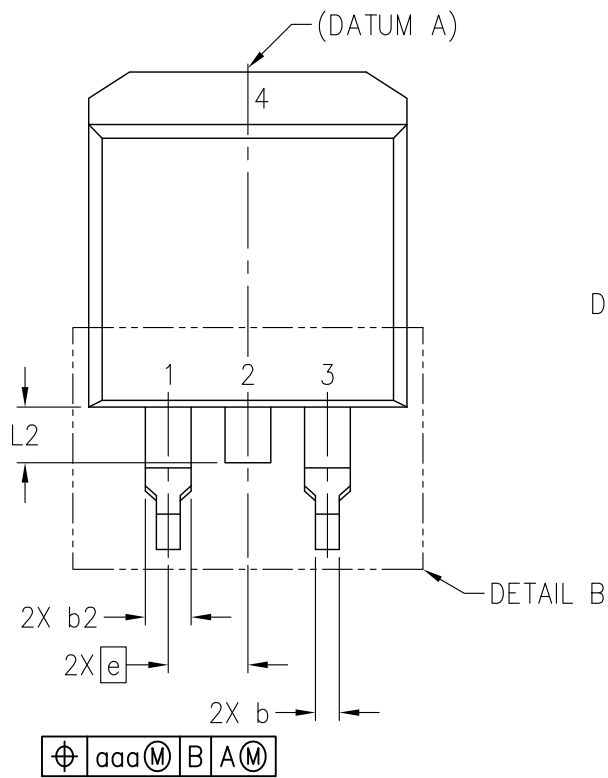
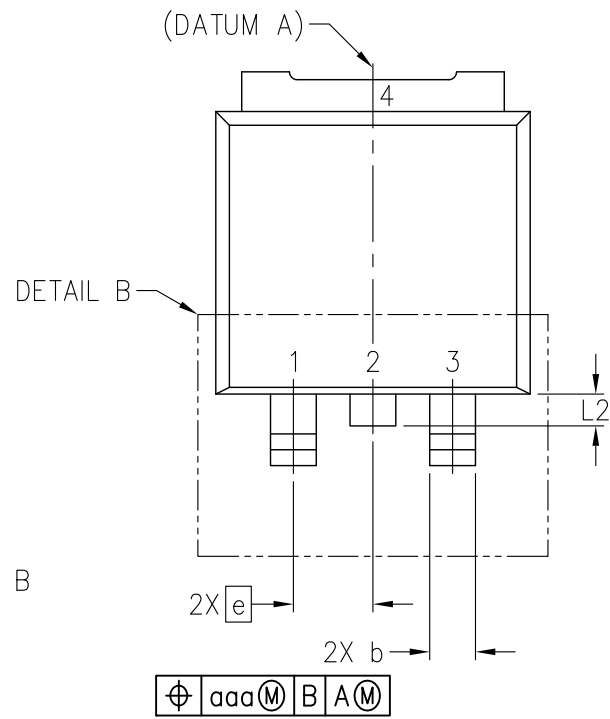


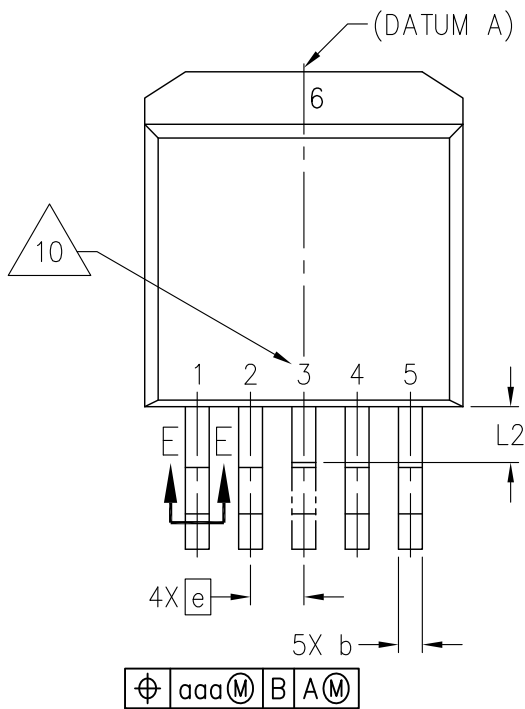
JEDEC SOLID STATE PRODUCT OUTLINE Copyright © 2013 JEDEC		THIS <i>REGISTERED OUTLINE</i> HAS BEEN PREPARED BY THE JEDEC JC-11 COMMITTEE AND REFLECTS A PRODUCT WITH ANTICIPATED USAGE IN THE ELECTRONICS INDUSTRY; CHANGES ARE LIKELY TO OCCUR.				
TITLE PLASTIC SURFACE MOUNTED HEADER FAMILY		PACKAGE DESIGNATOR H-PSIP-G	NUMBER TO-263	ISSUE F	DATE SEP 2013	SHEET 1 OF 12



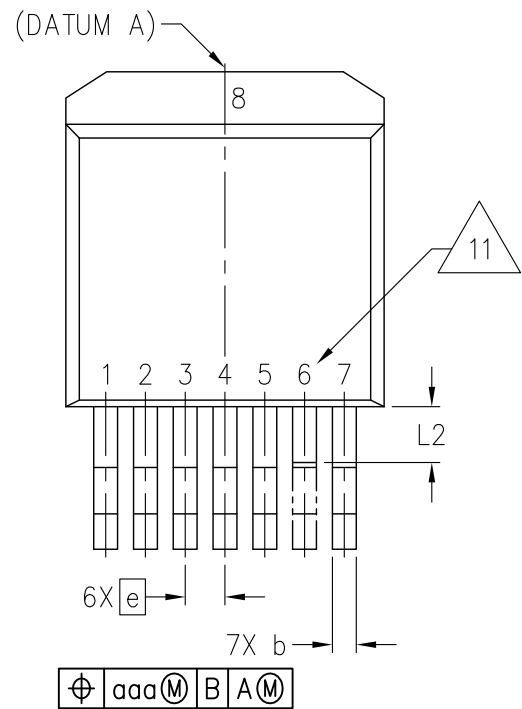
VARIATION AB



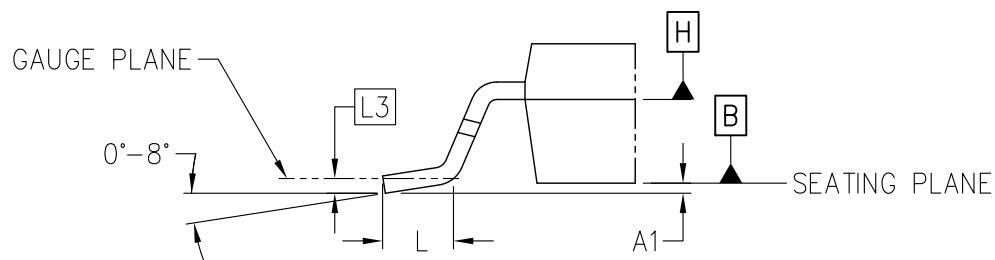
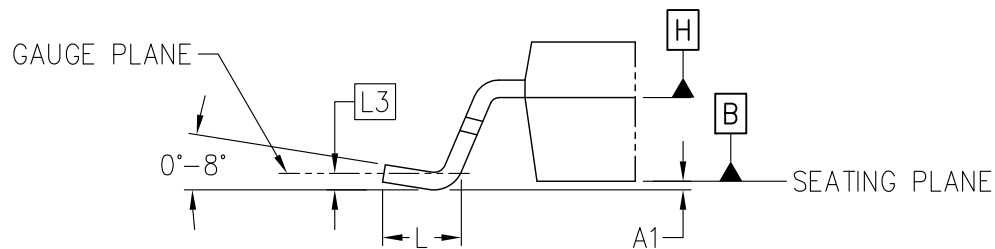
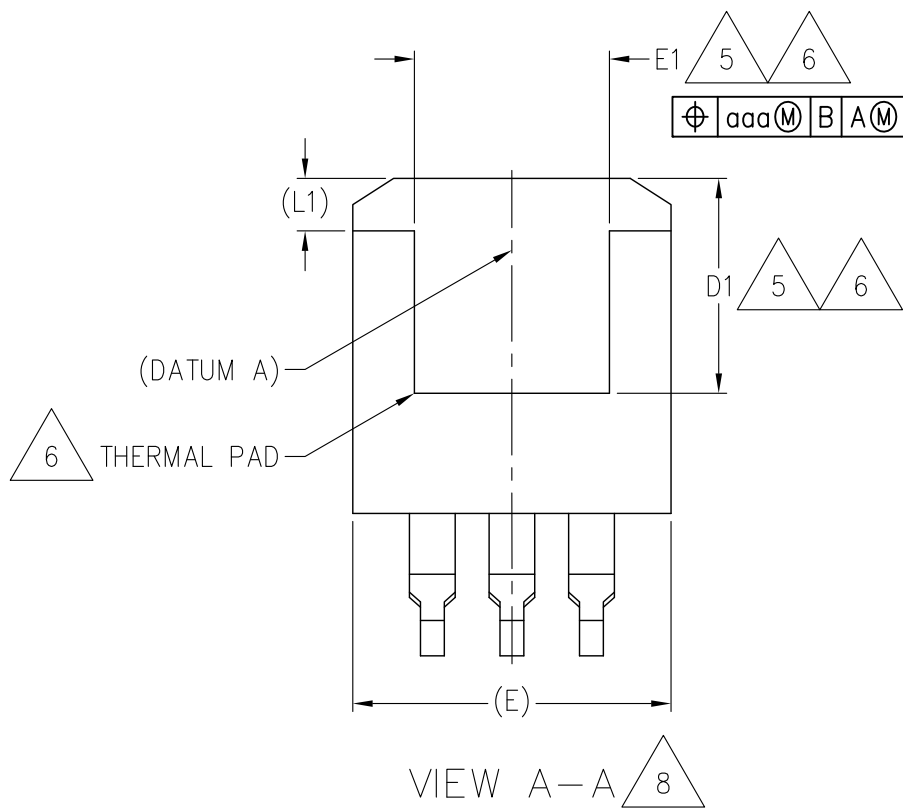
VARIATION AC



VARIATION BA-BB 



VARIATION CA-CB 



DETAIL C
OPTIONAL TIP LEADFORM
ROTATED 90° CW

TABLE 1

VARIATIONS (ALL DIMENSIONS SHOWN IN INCHES)												
SYMBOL	AA			NOTES	AB			NOTES	AC			NOTES
	MIN	NOM	MAX		MIN	NOM	MAX		MIN	NOM	MAX	
A	0.160	—	0.190		0.160	—	0.190		0.050	—	0.080	
A1	0.000	—	0.010		0.000	—	0.010		0.000	—	0.010	
b	0.020	—	0.039		0.020	—	0.039		0.045	—	0.064	
b1	0.020	—	0.035		0.020	—	0.035		0.045	—	0.060	
b2	0.045	—	0.070		0.045	—	0.070		—	—	—	
b3	0.045	—	0.068		0.045	—	0.068		—	—	—	
c	0.015	—	0.029		0.015	—	0.029		0.011	—	0.025	
c1	0.015	—	0.023		0.015	—	0.023		0.011	—	0.019	
c2	0.045	—	0.065		0.045	—	0.065		—	—	—	
D	0.330	—	0.380	4	0.330	—	0.380	4	0.320	—	0.370	4
D1	0.270	—	—	5,6,8	0.270	—	—	5,6,8	0.250	—	—	5,6
E	0.380	—	0.420	4,5	0.380	—	0.420	4,5	0.375	—	0.415	4
E1	0.245	—	—	5,6,8	0.245	—	—	5,6,8	0.315	—	—	5,6
e	0.100 BSC				0.100 BSC				0.100 BSC			
H	0.575	—	0.625		0.575	—	0.625		0.470	—	0.520	
L	0.070	—	0.110		0.070	—	0.110		0.040	—	0.080	
L1	—	—	0.066	5	—	—	0.066	5	—	—	0.050	
L2	—	—	—		—	—	0.070		—	—	0.040	
L3	0.010 BSC				0.010 BSC				0.010 BSC			
N	4				3			7	3			
aaa	0.010				0.010				0.010			
NOTES	1,2,9				1,2,9				1,2,9			
REF	10-424				10-424				10-452			
ISSUE	D				D				F			

TABLE 2

VARIATIONS (ALL DIMENSIONS SHOWN IN INCHES)												
SYMBOL	BA			NOTES	AA-1			NOTES	AB-1			NOTES
	MIN	NOM	MAX		MIN	NOM	MAX		MIN	NOM	MAX	
A	0.160	—	0.190		0.160	—	0.190		0.160	—	0.190	
A1	0.000	—	0.010		0.000	—	0.010		0.000	—	0.010	
b	0.020	—	0.039		0.020	—	0.039		0.020	—	0.039	
b1	0.020	—	0.035		0.020	—	0.035		0.020	—	0.035	
b2	—	—	—		0.045	—	0.070		0.045	—	0.070	
b3	—	—	—		0.045	—	0.068		0.045	—	0.068	
c	0.015	—	0.029		0.015	—	0.029		0.015	—	0.029	
c1	0.015	—	0.023		0.015	—	0.023		0.015	—	0.023	
c2	0.045	—	0.065		0.015	—	0.065		0.015	—	0.065	
D	0.330	—	0.380	4	0.330	—	0.380	4	0.330	—	0.380	4
D1	0.270	—	—	5,6,8	0.270	—	—	5,6,8	0.270	—	—	5,6,8
E	0.380	—	0.420	4,5	0.380	—	0.420	4,5	0.380	—	0.420	4,5
E1	0.245	—	—	5,6,8	0.245	—	—	5,6,8	0.245	—	—	5,6,8
e	0.067 BSC				0.100 BSC				0.100 BSC			
H	0.575	—	0.625		0.575	—	0.625		0.575	—	0.625	
L	0.070	—	0.110		0.070	—	0.110		0.070	—	0.110	
L1	—	—	0.066	5	—	—	0.066	5	—	—	0.066	5
L2	—	—	—		—	—	—		—	—	0.070	
L3	0.010 BSC				0.010 BSC				0.010 BSC			
N	6				4				3			7
aaa	0.010				0.010				0.010			
NOTES	1,2,9				1,2,9				1,2,9			
REF	10-424				10-443				10-443			
ISSUE	D				E				E			

TABLE 3

VARIATIONS (ALL DIMENSIONS SHOWN IN INCHES)												
SYMBOL	BA-1			NOTES	BB			NOTES	CA			NOTES
	MIN	NOM	MAX		MIN	NOM	MAX		MIN	NOM	MAX	
A	0.160	—	0.190		0.160	—	0.190		0.160	—	0.190	
A1	0.000	—	0.010		0.000	—	0.010		0.000	—	0.010	
b	0.020	—	0.039		0.020	—	0.039		0.020	—	0.036	
b1	0.020	—	0.035		0.020	—	0.035		0.020	—	0.032	
b2	—	—	—		—	—	—		—	—	—	
b3	—	—	—		—	—	—		—	—	—	
c	0.015	—	0.029		0.015	—	0.029		0.015	—	0.029	
c1	0.015	—	0.023		0.015	—	0.023		0.015	—	0.023	
c2	0.015	—	0.065		0.045	—	0.065		0.045	—	0.065	
D	0.330	—	0.380	4	0.330	—	0.380	4	0.330	—	0.380	4
D1	0.270	—	—	5,6,8	0.270	—	—	5,6,8	0.270	—	—	5,6,8
E	0.380	—	0.420	4,5	0.380	—	0.420	4,5	0.380	—	0.420	4,5
E1	0.245	—	—	5,6,8	0.245	—	—	5,6,8	0.245	—	—	5,6,8
e	0.067 BSC				0.067 BSC				0.050 BSC			
H	0.575	—	0.625		0.575	—	0.625		0.575	—	0.625	
L	0.070	—	0.110		0.070	—	0.110		0.070	—	0.110	
L1	—	—	0.066	5	—	—	0.066	5	—	—	0.066	5
L2	—	—	—		—	—	0.070		—	—	—	
L3	0.010 BSC				0.010 BSC				0.010 BSC			
N	6				5			10	8			
aaa	0.010				0.010				0.010			
NOTES	1,2,9				1,2,9				1,2,9			
REF	10-443				10-424				10-424			
ISSUE	E				D				D			

TABLE 4

VARIATIONS (ALL DIMENSIONS SHOWN IN INCHES)								
SYMBOL	CB			NOTES	BB-1			NOTES
	MIN	NOM	MAX		MIN	NOM	MAX	
A	0.160	—	0.190		0.160	—	0.190	
A1	0.000	—	0.010		0.000	—	0.010	
b	0.020	—	0.036		0.020	—	0.039	
b1	0.020	—	0.032		0.020	—	0.035	
b2	—	—	—		—	—	—	
b3	—	—	—		—	—	—	
c	0.015	—	0.029		0.015	—	0.029	
c1	0.015	—	0.023		0.015	—	0.023	
c2	0.045	—	0.065		0.015	—	0.065	
D	0.330	—	0.380	4	0.330	—	0.380	4
D1	0.270	—	—	5,6,8	0.270	—	—	5,6,8
E	0.380	—	0.420	4,5	0.380	—	0.420	4,5
E1	0.245	—	—	5,6,8	0.245	—	—	5,6,8
e	0.050 BSC				0.067 BSC			
H	0.575	—	0.625		0.575	—	0.625	
L	0.070	—	0.110		0.070	—	0.110	
L1	—	—	0.066	5	—	—	0.066	5
L2	—	—	0.070		—	—	0.070	
L3	0.010 BSC				0.010 BSC			
N	7			11	5			10
aaa	0.010				0.010			
NOTES	1,2,9				1,2,9			
REF	10-424				10-443			
ISSUE	D				E			

TABLE 5

VARIATIONS (ALL DIMENSIONS SHOWN IN MILLIMETERS)												
SYMBOL	AA			NOTES	AB			NOTES	AC			NOTES
	MIN	NOM	MAX		MIN	NOM	MAX		MIN	NOM	MAX	
A	4.065	—	4.825		4.065	—	4.825		1.270	—	2.030	
A1	0.000	—	0.255		0.000	—	0.255		0.000	—	0.255	
b	0.508	—	0.991		0.508	—	0.991		1.143	—	1.626	
b1	0.508	—	0.889		0.508	—	0.889		1.143	—	1.524	
b2	1.143	—	1.778		1.143	—	1.778		—	—	—	
b3	1.143	—	1.727		1.143	—	1.727		—	—	—	
c	0.381	—	0.737		0.381	—	0.737		0.279	—	0.635	
c1	0.381	—	0.584		0.381	—	0.584		0.279	—	0.483	
c2	1.143	—	1.651		1.143	—	1.651		—	—	—	
D	8.380	—	9.650	4	8.380	—	9.650	4	8.130	—	9.400	4
D1	6.860	—	—	5,6,8	6.860	—	—	5,6,8	6.350	—	—	5,6
E	9.650	—	10.670	4,5	9.650	—	10.670	4,5	9.525	—	10.540	4
E1	6.225	—	—	5,6,8	6.225	—	—	5,6,8	8.000	—	—	5,6
e	2.540 BSC				2.540 BSC				2.540 BSC			
H	14.605	—	15.875		14.605	—	15.875		11.940	—	13.210	
L	1.780	—	2.795		1.780	—	2.795		1.015	—	2.030	
L1	—	—	1.676	5	—	—	1.676	5	—	—	1.270	
L2	—	—	—		—	—	1.780		—	—	1.015	
L3	0.255 BSC				0.255 BSC				0.255 BSC			
N	4				3			7	3			
aaa	0.254				0.254				0.254			
NOTES	1,2,9				1,2,9				1,2,9			
REF	10-424				10-424				10-452			
ISSUE	D				D				F			

TABLE 6

VARIATIONS (ALL DIMENSIONS SHOWN IN MILLIMETERS)												
SYMBOL	BA			NOTES	AA-1			NOTES	AB-1			NOTES
	MIN	NOM	MAX		MIN	NOM	MAX		MIN	NOM	MAX	
A	4.065	—	4.825		4.065	—	4.825		4.065	—	4.825	
A1	0.000	—	0.255		0.000	—	0.255		0.000	—	0.255	
b	0.508	—	0.991		0.508	—	0.991		0.508	—	0.991	
b1	0.508	—	0.889		0.508	—	0.889		0.508	—	0.889	
b2	—	—	—		1.143	—	1.778		1.143	—	1.778	
b3	—	—	—		1.143	—	1.727		1.143	—	1.727	
c	0.381	—	0.737		0.381	—	0.737		0.381	—	0.737	
c1	0.381	—	0.584		0.381	—	0.584		0.381	—	0.584	
c2	1.143	—	1.651		0.381	—	1.651		0.381	—	1.651	
D	8.380	—	9.650	4	8.380	—	9.650	4	8.380	—	9.650	4
D1	6.860	—	—	5,6,8	6.860	—	—	5,6,8	6.860	—	—	5,6,8
E	9.650	—	10.670	4,5	9.650	—	10.670	4,5	9.650	—	10.670	4,5
E1	6.225	—	—	5,6,8	6.225	—	—	5,6,8	6.225	—	—	5,6,8
e	1.702 BSC				2.540 BSC				2.540 BSC			
H	14.605	—	15.875		14.605	—	15.875		14.605	—	15.875	
L	1.780	—	2.795		1.780	—	2.795		1.780	—	2.795	
L1	—	—	1.676	5	—	—	1.676	5	—	—	1.676	5
L2	—	—	—		—	—	—		—	—	1.780	
L3	0.255 BSC				0.255 BSC				0.255 BSC			
N	6				4				3			7
aaa	0.254				0.254				0.254			
NOTES	1,2,9				1,2,9				1,2,9			
REF	10-424				10-443				10-443			
ISSUE	D				E				E			

TABLE 7

VARIATIONS (ALL DIMENSIONS SHOWN IN MILLIMETERS)												
SYMBOL	BA-1			NOTES	BB			NOTES	CA			NOTES
	MIN	NOM	MAX		MIN	NOM	MAX		MIN	NOM	MAX	
A	4.065	—	4.825		4.065	—	4.825		4.065	—	4.825	
A1	0.000	—	0.255		0.000	—	0.255		0.000	—	0.255	
b	0.508	—	0.991		0.508	—	0.991		0.508	—	0.914	
b1	0.508	—	0.889		0.508	—	0.889		0.508	—	0.813	
b2	—	—	—		—	—	—		—	—	—	
b3	—	—	—		—	—	—		—	—	—	
c	0.381	—	0.737		0.381	—	0.737		0.381	—	0.737	
c1	0.381	—	0.584		0.381	—	0.584		0.381	—	0.584	
c2	0.381	—	1.651		1.143	—	1.651		1.143	—	1.651	
D	8.380	—	9.650	4	8.380	—	9.650	4	8.380	—	9.650	4
D1	6.860	—	—	5,6,8	6.860	—	—	5,6,8	6.860	—	—	5,6,8
E	9.650	—	10.670	4,5	9.650	—	10.670	4,5	9.650	—	10.670	4,5
E1	6.225	—	—	5,6,8	6.225	—	—	5,6,8	6.225	—	—	5,6,8
e	1.702 BSC				1.702 BSC				1.270 BSC			
H	14.605	—	15.875		14.605	—	15.875		14.605	—	15.875	
L	1.780	—	2.795		1.780	—	2.795		1.780	—	2.795	
L1	—	—	1.676	5	—	—	1.676	5	—	—	1.676	5
L2	—	—	—		—	—	1.780		—	—	—	
L3	0.255 BSC				0.255 BSC				0.255 BSC			
N	6				5			10	8			
aaa	0.254				0.254				0.254			
NOTES	1,2,9				1,2,9				1,2,9			
REF	10-443				10-424				10-424			
ISSUE	E				D				D			

TABLE 8

VARIATIONS (ALL DIMENSIONS SHOWN IN MILLIMETERS)								
SYMBOL	CB			NOTES	BB-1			NOTES
	MIN	NOM	MAX		MIN	NOM	MAX	
A	4.065	—	4.825		4.065	—	4.825	
A1	0.000	—	0.255		0.000	—	0.255	
b	0.508	—	0.914		0.508	—	0.991	
b1	0.508	—	0.813		0.508	—	0.889	
b2	—	—	—		—	—	—	
b3	—	—	—		—	—	—	
c	0.381	—	0.737		0.381	—	0.737	
c1	0.381	—	0.584		0.381	—	0.584	
c2	1.143	—	1.651		0.381	—	1.651	
D	8.380	—	9.650	4	8.380	—	9.650	4
D1	6.860	—	—	5,6,8	6.860	—	—	5,6,8
E	9.650	—	10.670	4,5	9.650	—	10.670	4,5
E1	6.225	—	—	5,6,8	6.225	—	—	5,6,8
e	1.270 BSC				1.702 BSC			
H	14.605	—	15.875		14.605	—	15.875	
L	1.780	—	2.795		1.780	—	2.795	
L1	—	—	1.676	5	—	—	1.676	5
L2	—	—	1.780		—	—	1.780	
L3	0.255 BSC				0.255 BSC			
N	7			11	5			10
aaa	0.254				0.254			
NOTES	1,2,9				1,2,9			
REF	10-424				10-443			
ISSUE	D				E			

NOTES:

1. DIMENSIONING AND TOLERANCING PER ASME Y14.5–2009.

2. DIMENSIONS IN INCHES AND MILLIMETERS.



CHAMFER OPTIONAL.



DIMENSION D & E DO NOT INCLUDE MOLD FLASH, MOLD FLASH SHALL NOT EXCEED 0.005 INCH PER SIDE. THESE DIMENSIONS ARE MEASURED AT THE OUTERMOST EXTREME OF THE PLASTIC BODY AT DATUM H.



THERMAL PAD CONTOUR OPTIONAL WITHIN DIMENSIONS E & L1,& D1 & E1.



DIMENSIONS D1 & E1 ESTABLISH A MINIMUM MOUNTING SURFACE FOR THE THERMAL PAD.



CENTER LEAD REMOVED IN VARIATION AB AND AC.



VIEW AA THERMAL PAD DIMENSIONS APPLY TO ALL VARIATIONS, 3 LEAD VARIATION SHOWN FOR REFERENCE ONLY.



VIEW C TIP LEADFORM DIMENSIONS APPLY TO ALL VARIATIONS.



PACKAGE VARIATION BB IS A 5 LEAD VERSION OF THE 6 LEAD VARIATION BA WHERE LEAD #3 HAS BEEN REMOVED FROM THE 6 LEA BA VARIATION.



PACKAGE VARIATION CB IS A 7 LEAD VERSION OF THE 8 LEAD VARIATION CA WHERE LEAD #6 HAS BEEN REMOVED FROM THE 8 LEAD CA VARIATION.

CHANGE RECORD

IF THE CHANGE INVOLVES ANY WORDS ADDED OR DELETED (EXCLUDING DELETION OF ACCIDENTALLY REPEATED WORDS), THE CHANGE IS TO BE INCLUDED BELOW. PUNCTUATION CHANGES MAY OR MAY NOT BE INCLUDED.

INITIAL ISSUE: A	DATE: –	ITEM NUMBER: –
------------------	---------	----------------

CHANGE RECORD HISTORY:

ISSUE: E	DATE: JULY 2007	ITEM NUMBER: 10-443
----------	-----------------	---------------------

LOCATION	CHANGED FROM:	CHANGED TO:
PAGE 5	ADDED PAGE	ADDED VARIATIONS AA-1, AB-1, BA-1
PAGE 5	c2 MIN VALUE TO 0.045	c2 MIN VALUE TO 0.015
PAGE 7	ADDED PAGE	ADDED VARIATION BB-1
PAGE 7	c2 MIN VALUE TO 0.045	c2 MIN VALUE TO 0.015
PAGE 1	PACKAGE DESIGNATOR R-PSFM-F	PACKAGE DESIGNATOR R-PSFM

ISSUE: F	DATE: SEPTEMBER 2013	ITEM NUMBER: 10-452
----------	----------------------	---------------------

LOCATION	CHANGED FROM:	CHANGED TO:
ALL SHEETS		NEWEST JEDEC MO TEMPLATE
ALL SHEETS	MISSING LEADING ZERO (e.g. .000)	ADDED LEADING ZERO (e.g. 0.000)
SHEET 2	VARIATIONS DWG	ADDED VARIATION AC
SHEET 4	ADDED SHEET	ADDED VARIATION AC
SHEETS 9 – 11	ADDED SHEETS	ADDED DIMENSION TABLES IN MILLIMETERS
SHEET 12, NOTE 2	DIMENSIONS ARE IN INCHES	ADDED IN MILLIMETERS
SHEET 12, NOTE 7	CENTER LEAD REMOVED IN VARIATION AB	ADDED VARIATION AC